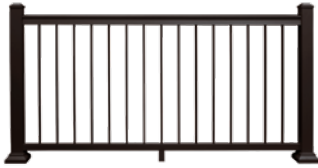




**WILLIAMS**  
ALUMINUM RAILING™

# LOOKBOOK

# WILLIAMS RAILING SYSTEMS OVERVIEW



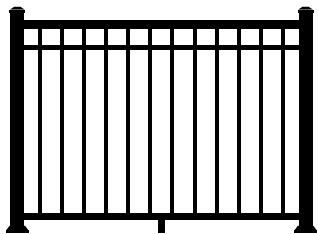
**BALUSTER  
RAILING**



**VERTICAL  
CABLE RAILING**



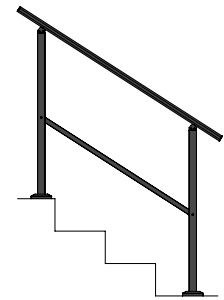
**HORIZONTAL  
CABLE RAILING**



**PRO SERIES FENCING**



**ADA HANDRAIL**



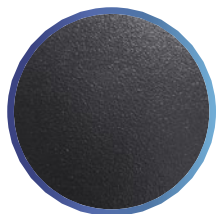
**ADJUSTABLE  
HANDRAIL**

Baluster and cable railing systems are available with colonial top rails or drink rail panels which include drink rail attach clips. Deck boards are not included.

## TEXTURED POWDER COAT COLORS

---

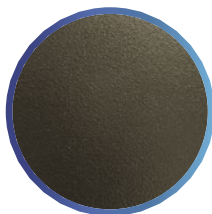
Our railing is coated with the highest quality architectural grade powder coating in multiple color options, giving you reliability and durability with little maintenance.



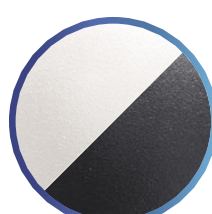
**BLACK**



**WHITE**

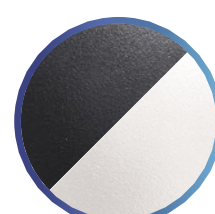


**BRONZE**



**PIANO RAIL®**

*White with  
Black infill.*

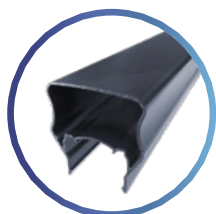


**TUXEDO RAIL®**

*Black with  
White infill.*

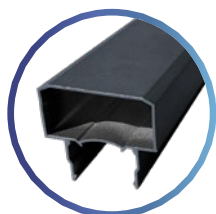
## TOP RAIL PROFILES

---



**COLONIAL**

Standard Railing  
Panels



**METRO**

Commercial  
Railing Panels



**DRINK RAIL**

Choose your own  
deck board

## POST OPTIONS

---

**Railing Post Heights:**

- ♦ 36in
- ♦ 42in
- ♦ 48in

**Fence Post Heights:**

- ♦ 48in
- ♦ 54in

**Post Mount Options:**

- ♦ Surface Mount
- ♦ Buried (Fencing)

# BALUSTER RAILING

Our aluminum baluster railing system is strong enough for commercial applications with elegance for any residential application. Spanning up to 8ft, the durable aluminum construction and simple assembly ensures a professional fit and finish to any project.





## PANEL SIZE OPTIONS

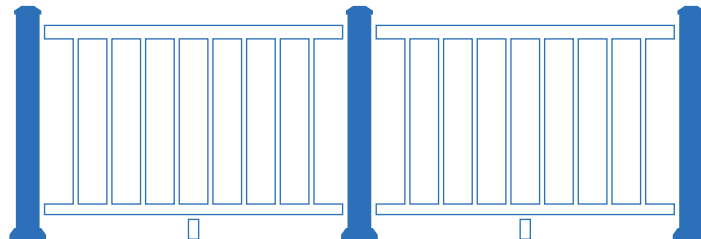
HEIGHT		LENGTH	ACTUAL SIZE
36in	X	6ft	33.5in H X 69.43in W
36in	X	8ft	33.5in H X 91.31in W
42in	X	6ft	39.0in H X 69.43in W
42in	X	8ft	39.0in H X 91.31in W

***Baluster Railing system includes deck panels and stair panels.***

## SYSTEM ASSEMBLY



**3in Post**



**POST-TO-POST**  
3in End Post - 3in Inline Post

# CABLE RAILING

Newest to the Williams Railing family is our cable railing system. Spanning up to 8ft, available in both horizontal and vertical cable, our cable railing is sure to impress.



## PANEL SIZE OPTIONS

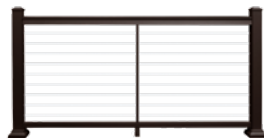
HEIGHT		LENGTH	ACTUAL SIZE
36in	X	6ft	33.5in H X 69.43in W
36in	X	8ft	33.5in H X 91.31in W
42in	X	6ft	39.0in H X 69.43in W
42in	X	8ft	39.0in H X 91.31in W

***Cable Railing systems include deck panels and stair panels.***

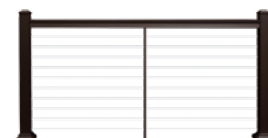
## CABLE STYLE OPTIONS



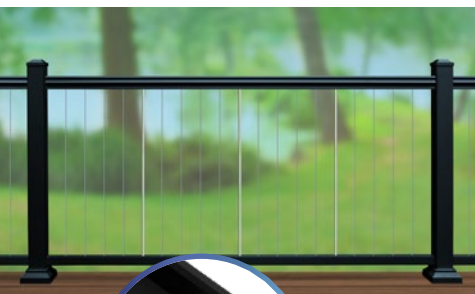
**VERTICAL  
CABLE RAILING**



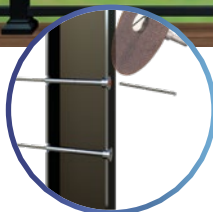
**HORIZONTAL CABLE  
FULL FRAME**



**HORIZONTAL CABLE  
TOP RAIL ONLY**



**TENSION BLOCK**  
To adjust tension of pre-assembled vertical cable



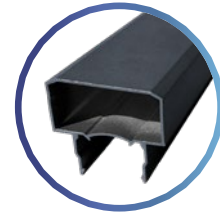
**EASY INSTALLATION**  
with simple tensioning system

**CABLE  
TOOLS**



# COMMERCIAL RAILING

Preassembled Heavy Duty Aluminum Panels for Commercial Applications feature 3/4in balusters and the contemporary Metro Top Rail. They pair with standard 42in and 48in High Posts.

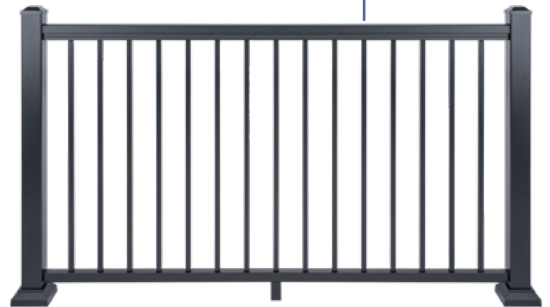


**METRO  
TOP  
RAIL**

## PANEL SIZES

HEIGHT		LENGTH	ACTUAL SIZE
42in	X	71.8in	39.0in H X 68.8in W

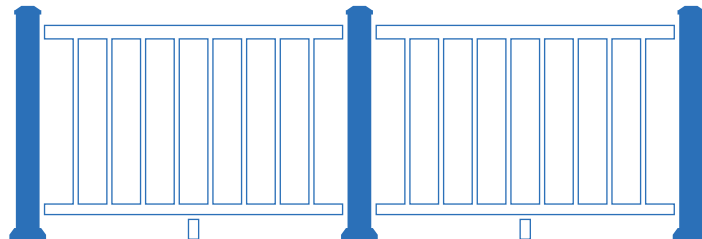
**Commercial Baluster Railing system includes deck panels and stair panels. Available in Black, White and Bronze.**



## SYSTEM ASSEMBLY



**3in Post**



**POST-TO-POST**  
*3in End Post - 3in Inline Post*



# ADJUSTABLE HANDRAILS

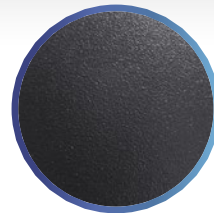
Adjustable Handrail is Available in 3-Step, 4-Step and 5-Step Complete Kits. They are designed for use on level and stair applications from 0° to 42° angles and mount to concrete or wood steps, ramps and sidewalks.

## ASSEMBLED SIZES

HEIGHT		LENGTH	Description
38.74in	X	39.61in	3-Step Kit
38.74in	X	52.6in	4-Step Kit
38.74in	X	65.96in	5-Step Kit

## FEATURES AND BENEFITS

- ♦ All components are pre-drilled for easy assembly. No special tools required.
- ♦ Premium aluminum construction.
- ♦ Complete kit for easy ordering. Minimal exposed fasteners for a clean, contemporary look.
- ♦ Durable black finish with no maintenance required.
- ♦ Suitable for indoor and outdoor use.
- ♦ 10 year limited warranty.



**BLACK**

# ADA HANDRAIL

Our ADA handrail can be installed on nearly any commercial or residential project, including stairs, ramps, and horizontal installations. Available in four easy starter kits, you can build exactly what you need for your project.





### ADA PIPE RAIL AND 90° RETURN KIT

For basic ADA system less than 94in length

### ADA 90° RETURN KIT

When pipe rail is cut into two pieces



### ADA PIPE RAIL EXTENSION KIT

To connect two ADA pipes rail longer than 94in

### ADA HANDICAP LOOP KIT

Add handrail return to ADA handrail system



*Additional parts also available for customization*



Pipe rail joining detail

# PRO SERIES FENCING

Our fence line offers the durability and elegance people have come to expect from our baluster railing line. With 48in and 54in height options, our fence line is a terrific fit for commercial and residential applications.





**48IN FENCE HEIGHT**



**54IN FENCE HEIGHT**

## **PRO SERIES (1/2IN X 3/4IN FENCE)**

### **Fence panel options:**

- ◆ 48in x 6ft Fence Panel
- ◆ 54in x 6ft Fence Panel



### **Fence post options:**

- ◆ 48in x 2/3in Surface Post
- ◆ 48in x 2/3in Buried Post
- ◆ 54in x 2/3in Surface Post
- ◆ 54in x 2/3in Buried Post



### **Fence gate kits:**

- ◆ 48in Fence Gate Kit
- ◆ 54in Fence Gate Kit



# FULL LINE OF PARTS AND ACCESSORIES

## RAILING GATE KITS



**BALUSTER  
GATE KIT**



**VERTICAL CABLE  
GATE KIT**

**Gate size options:**

- ◆ 36in x 38in (33.9in x 38in actual size)
- ◆ 36in x 48in (33.9in x 48in actual size)
- ◆ 42in x 48in (39.5in x 48in actual size)  
*(opening up to 49in wide)*



**HORIZONTAL CABLE  
GATE KIT**

## LIGHTING OPTIONS

**INDIRECT  
LIGHT**



**PERIMETER  
LIGHT**



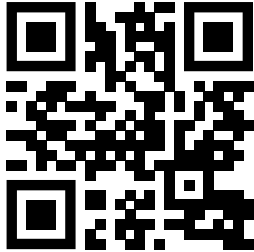
**SOLAR PERIMETER  
LIGHT**



**LOW PROFILE  
POST CAP**



# GET A FREE ESTIMATE



**Williams Railing offers a FREE estimation service for your project. Our team is ready to help you get all of the information you need including a full parts list, an official technical take off drawing and top customer service. Scan the code to request yours now!**

## 20-YEAR LIMITED WARRANTY

Williams Railing warrants its railing products to be free from manufacturing defects in material and workmanship to the original consumer purchaser. In addition to manufacturing defects, this warranty covers cracking, peeling, and blistering of the finish of our products. Subject to maintenance requirements.

Read more about our warranty and maintenance requirements at [WilliamsRailing.com/resources/warranty-information](https://www.WilliamsRailing.com/resources/warranty-information)



## PRODUCT TESTING AND CERTIFICATION

Williams Railing systems have been evaluated for structural integrity by an independent laboratory as per ICC-ES AC273 - acceptance criteria (approved/revised November 2021).

### **What is an ICC-ES Evaluation?**

ICC Evaluation Service (ICC-ES) is the industry leader in performing technical evaluations of building products, materials and systems for code compliance. Due to its diligence and unparalleled engineering experience, ICC-ES is the most widely accepted evaluation agency in the nation.

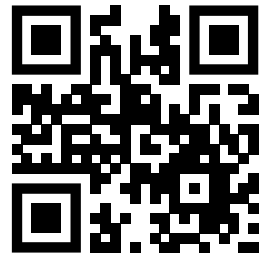


To read the report, please visit [WilliamsRailing.com/resources/testing-report](https://www.WilliamsRailing.com/resources/testing-report)



# **WILLIAMS** ALUMINUM RAILING™

For our full product line up,  
technical data and other resources,  
please visit [WilliamsRailing.com](https://www.WilliamsRailing.com)



☎ (855) 742-7245

Part # MI495000. Version 1.1  
©2024 WES, LLC. All Rights Reserved.

Available at

